



# DES MOINES AREA MPO

Iowa Commercial Real Estate Association

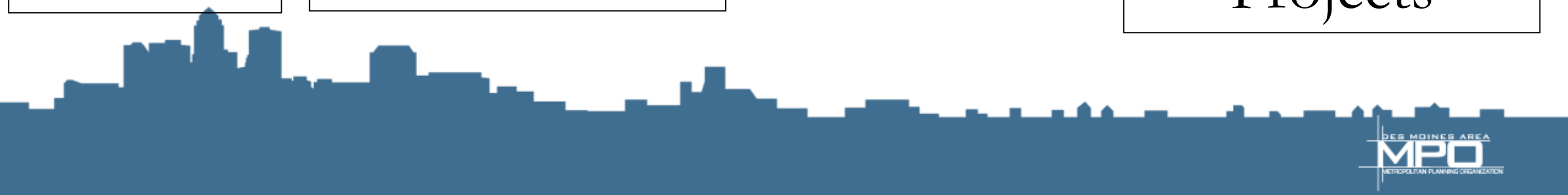
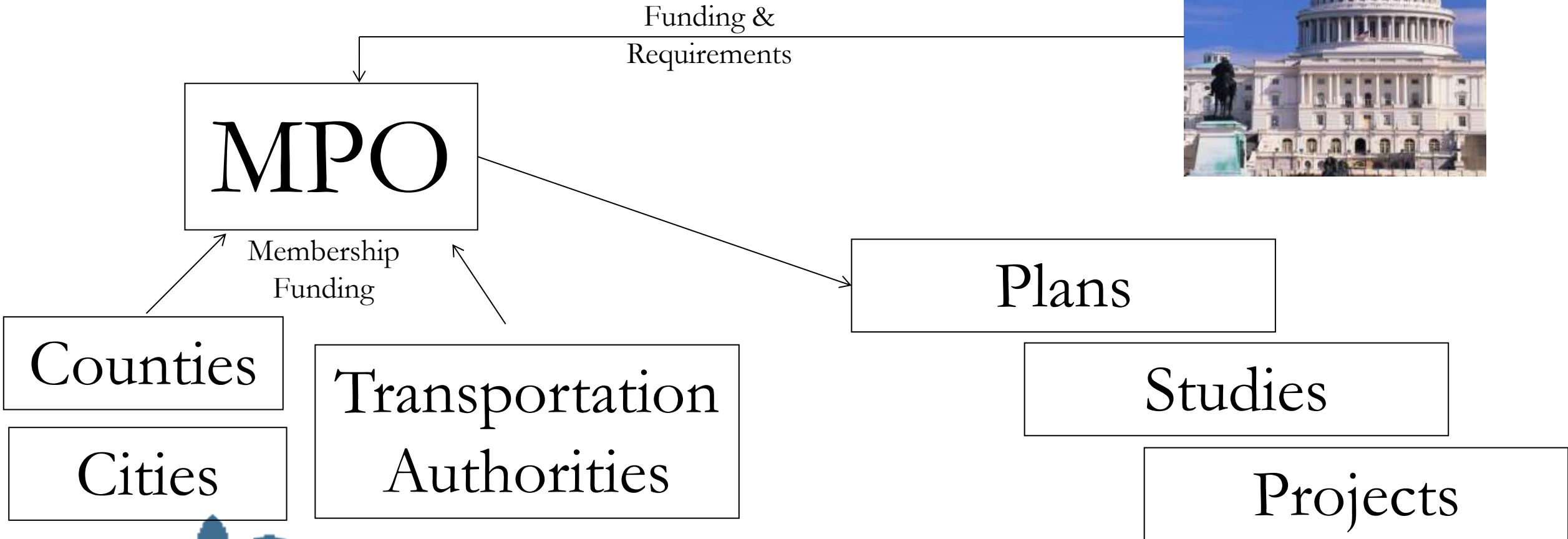
February 19, 2019

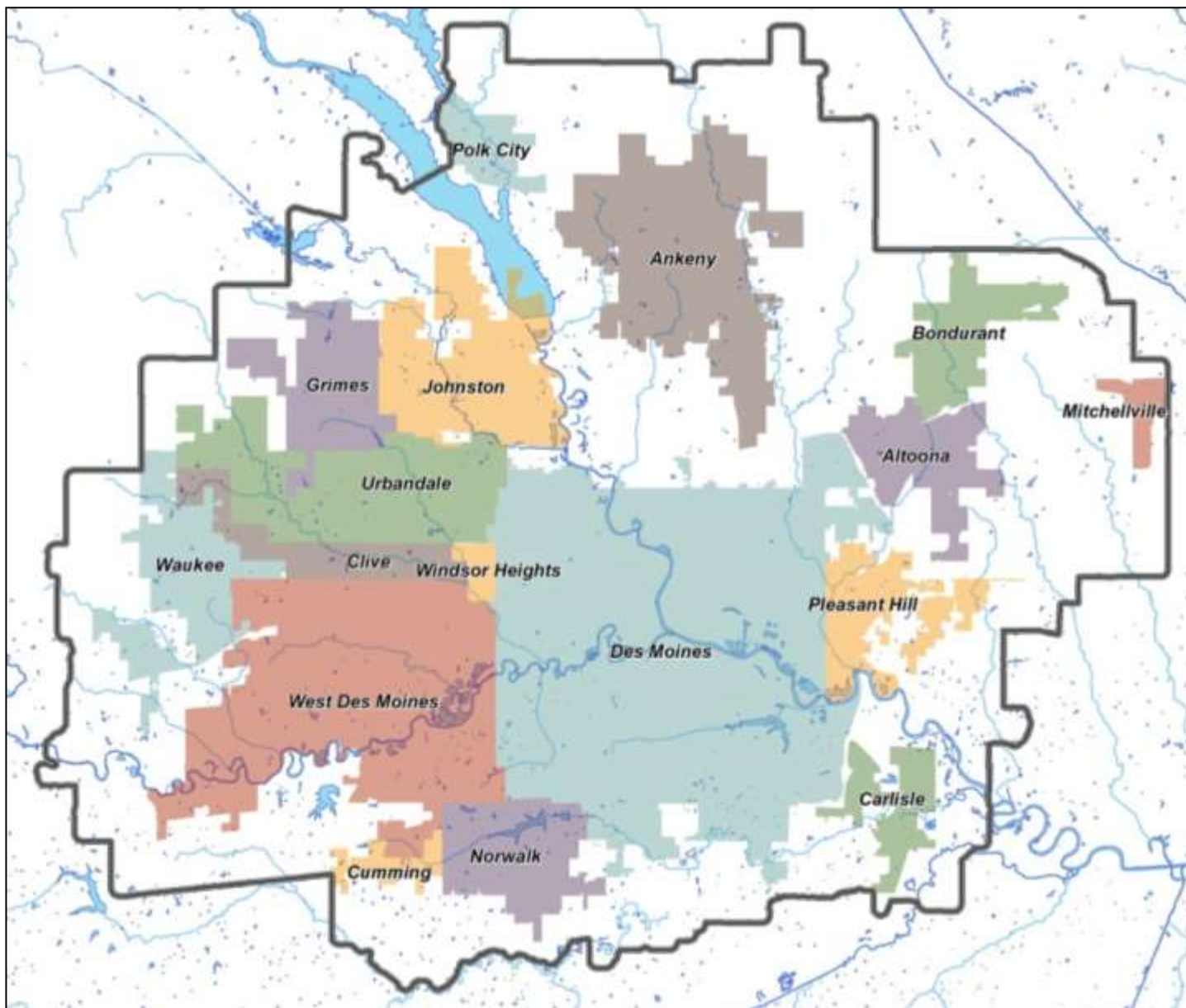
# Presentation Outline

---

- MPO Overview
- Regional Priority Projects
- Four signature initiatives
  - Des Moines Transload Facility
  - Container Locator
  - Iowa Data Bike
  - Water Trails

# MPO Overview





# What the MPO Does

---

- Short and long-range planning
- Data collection & analysis
- Transportation funding – approx. \$14 million annually
- Intergovernmental coordination on various issues
- Public education & training
- Legislative advocacy

# What the MPO Does NOT Do

---

- Road/bridge design, construction, and repair
- Enforcement of traffic laws
- Trail construction and maintenance
- Transit operations
- Land use planning and zoning

# REGIONAL PRIORITY PROJECTS

# Federal Legislative Agenda for Annual D.C. Trip

- Annually the MPO helps develop the region's list of priority projects for the Greater Des Moines Partnership's DC Trip





# Priority Street Projects

---

- Ankeny – Widening West First Street. (**\$6.9 million**)
- Carlisle – Improvements to Scotch Ridge Road and its intersection with Highway 5. (**\$3.5 million**)
- Windsor Heights – Three-lane complete street on University Avenue. (**\$6.7 million**)
- Des Moines / Pleasant Hill – SE Connector, a four-lane complete street connecting downtown to US 65. (**\$50 million**)
- Des Moines Airport – New Terminal. (**\$500 million**)

# Priority Street Projects

---

- Iowa DOT – Improve Interstate 35 in Ankeny (**\$51.3 million**)
  - Add auxiliary lanes from IA 160 to 1<sup>st</sup> Street
  - Reconfigure 1<sup>st</sup> Street Interchange
  - Widen to six lanes from 1<sup>st</sup> Street to NE 36<sup>th</sup> Street
- Polk County / Ankeny – Reconstruct NW 26<sup>th</sup>, widening from 2-lane rural road to 5-lane urban roadway from NW 66<sup>th</sup> to Oralabor Road.  
**(\$6.7 million)**
- West Des Moines – Widening Grand Avenue from 1<sup>st</sup> to 6<sup>th</sup> Street.  
**(\$5.6 million)**
- West Des Moines – Widen 8<sup>th</sup> Street from I-235 to Clegg Road.  
**(\$4.6 million)**

# Priority Bicycle/Pedestrian Projects

---

- Ankeny – Extend High Trestle Trail to connect the Gay Lea Wilson Trail and the Neal Smith Trail. **(\$2.4 million)**
- West Des Moines – Build pedestrian bridge across the Raccoon River between Raccoon river Park and Walnut Woods State Park. **(\$5 million)**
- Windsor Heights / West Des Moines – Build trail to connect Windsor Heights and West Des Moines at 73<sup>rd</sup> Street / 8<sup>th</sup> Street. **(\$2.5 million)**
- West Des Moines – Build trail along Sugar Creek to connect Waukee and West Des Moines. **(\$8 million)**

# DES MOINES TRANSLOAD FACILITY

# Transload Facility – Project Origins

- 2011 Intermodal Study Findings
  - Freight volume not sufficient to support a intermodal facility
  - Transload could be an option



# Intermodal Freight



# Transload Freight



# Project History

- 2014 Des Moines Rail Transload Feasibility Study
  - Feasibility analysis of specific site in Des Moines
  - Hired McClure Engineering, ERS, Via Rail to complete study

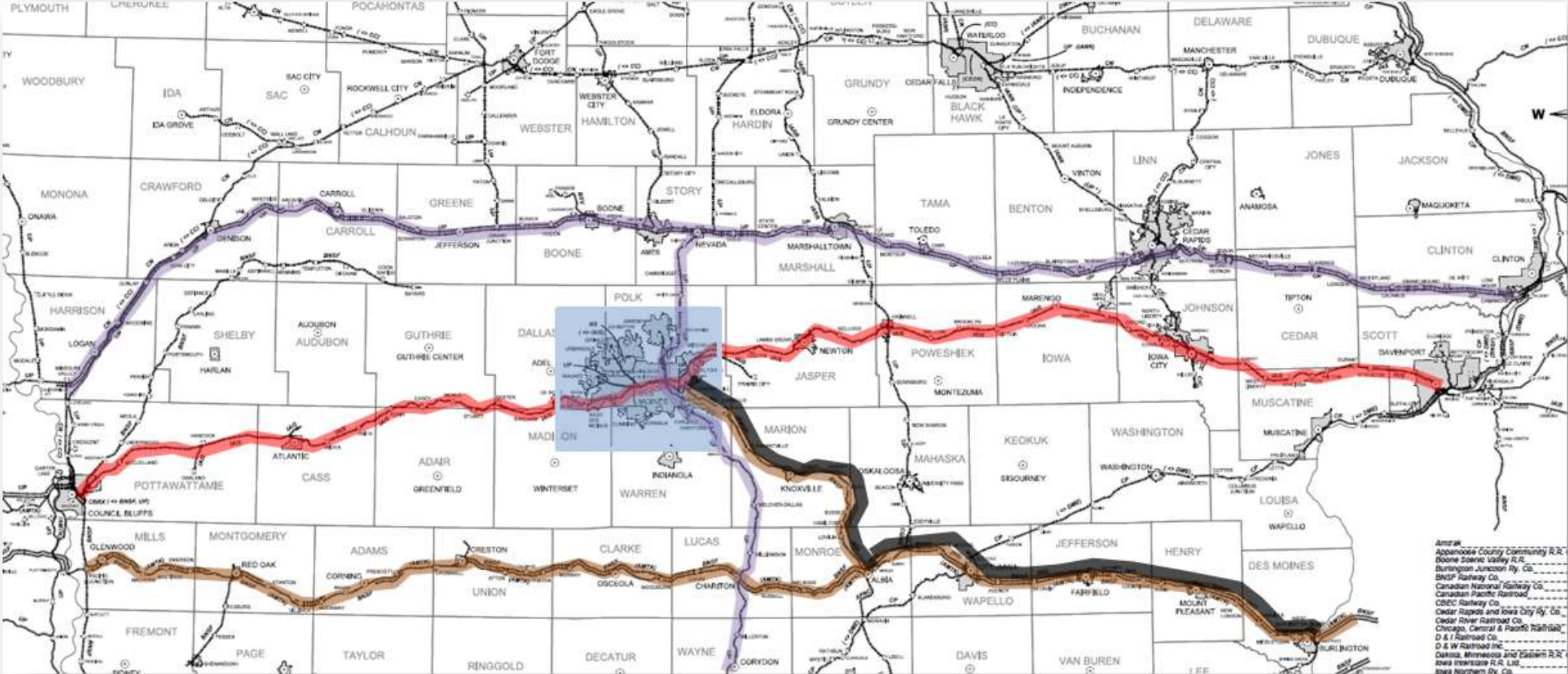




# Site Selection

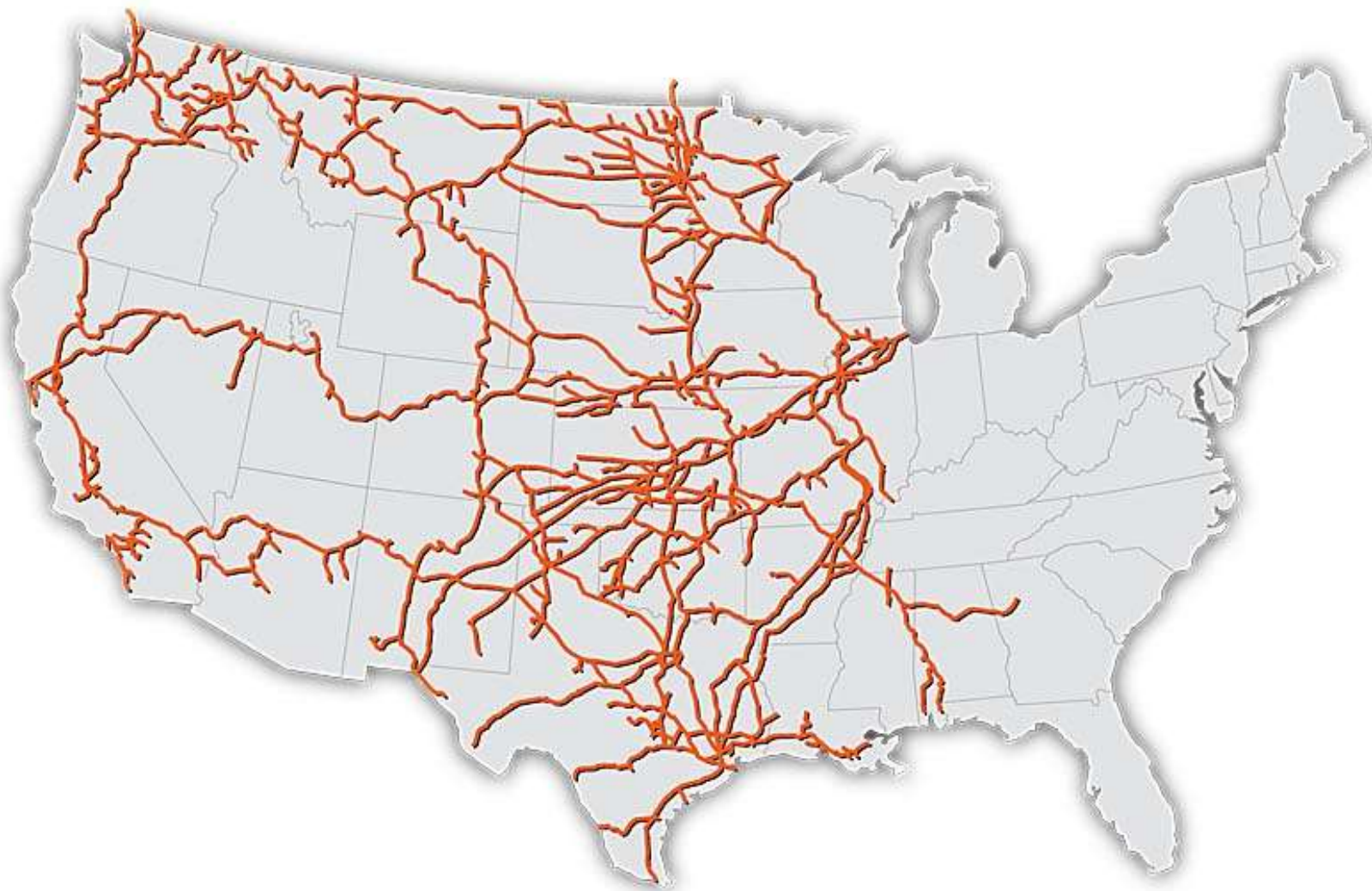


# Railroad Access



# Railroad Access

**BNSF**<sup>SM</sup>  
RAILWAY



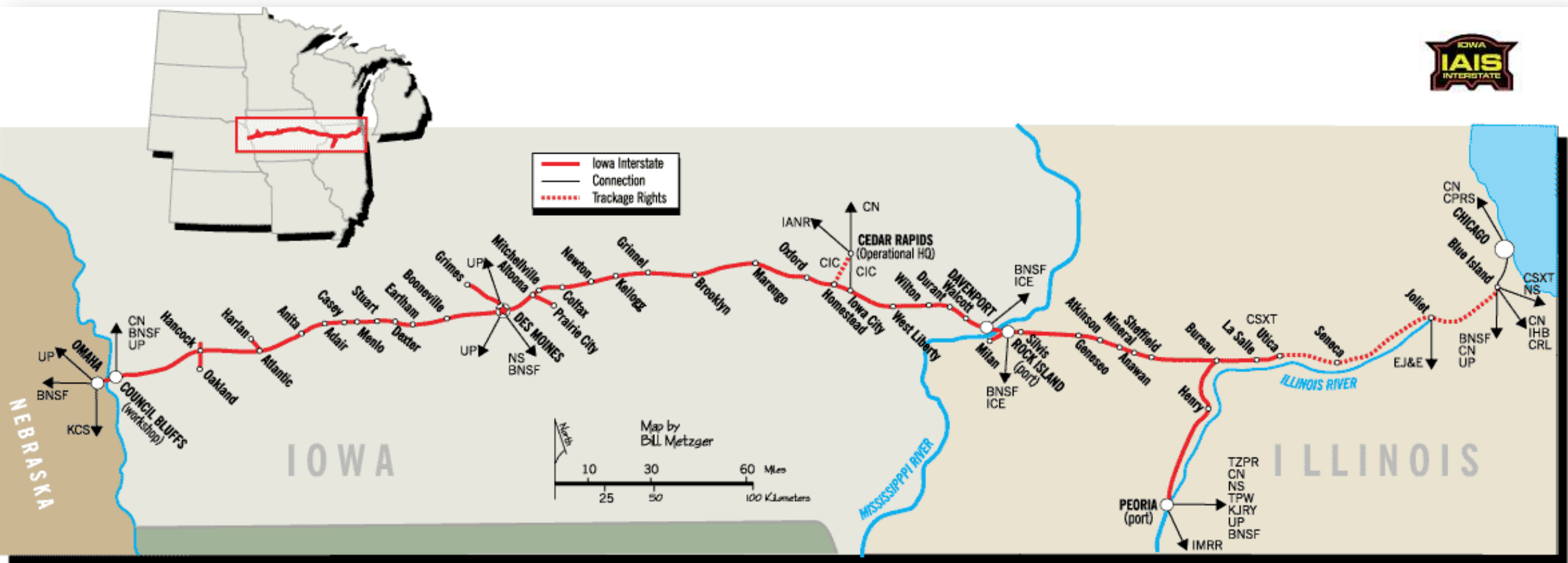
# Railroad Access



# Railroad Access



# Railroad Access



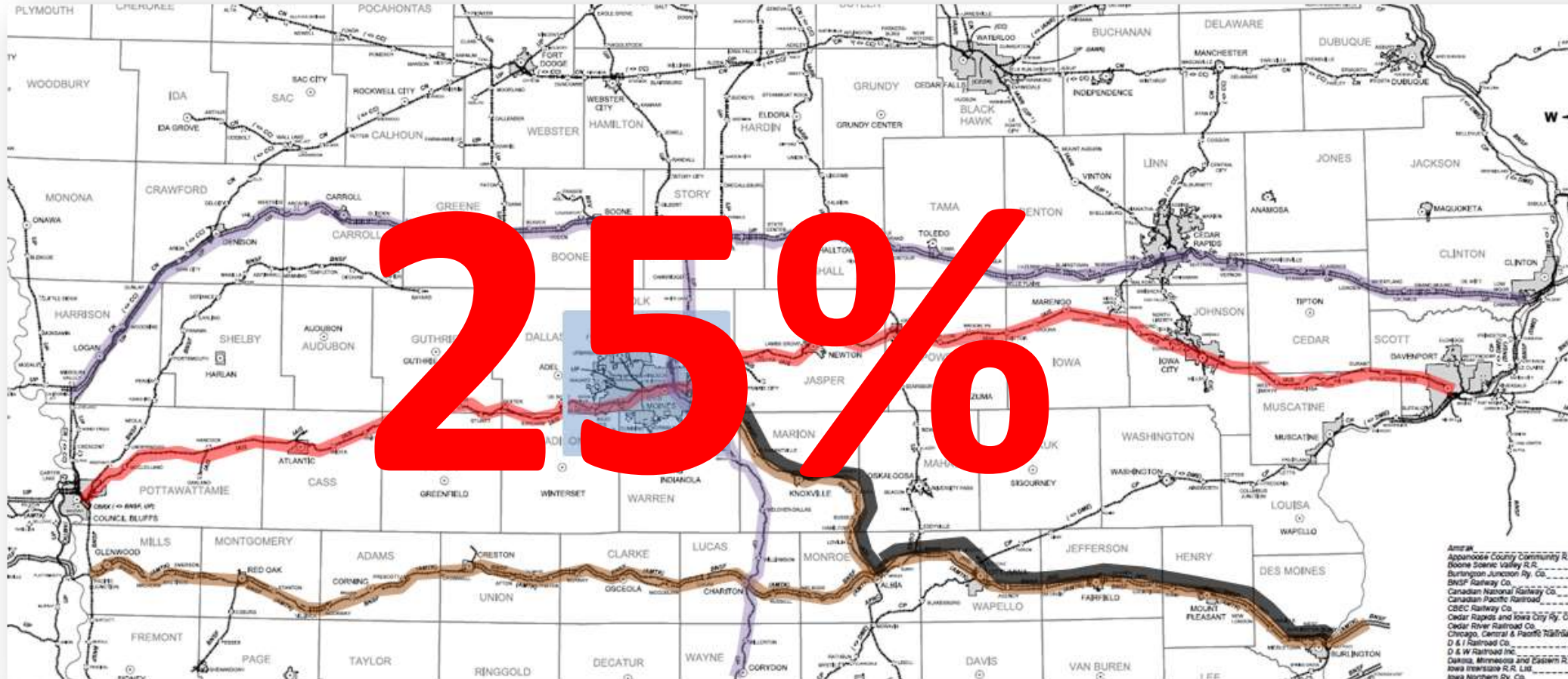
# Railroad Access



CSX SYSTEM MAP



# Competitive Advantage



Union Pacific

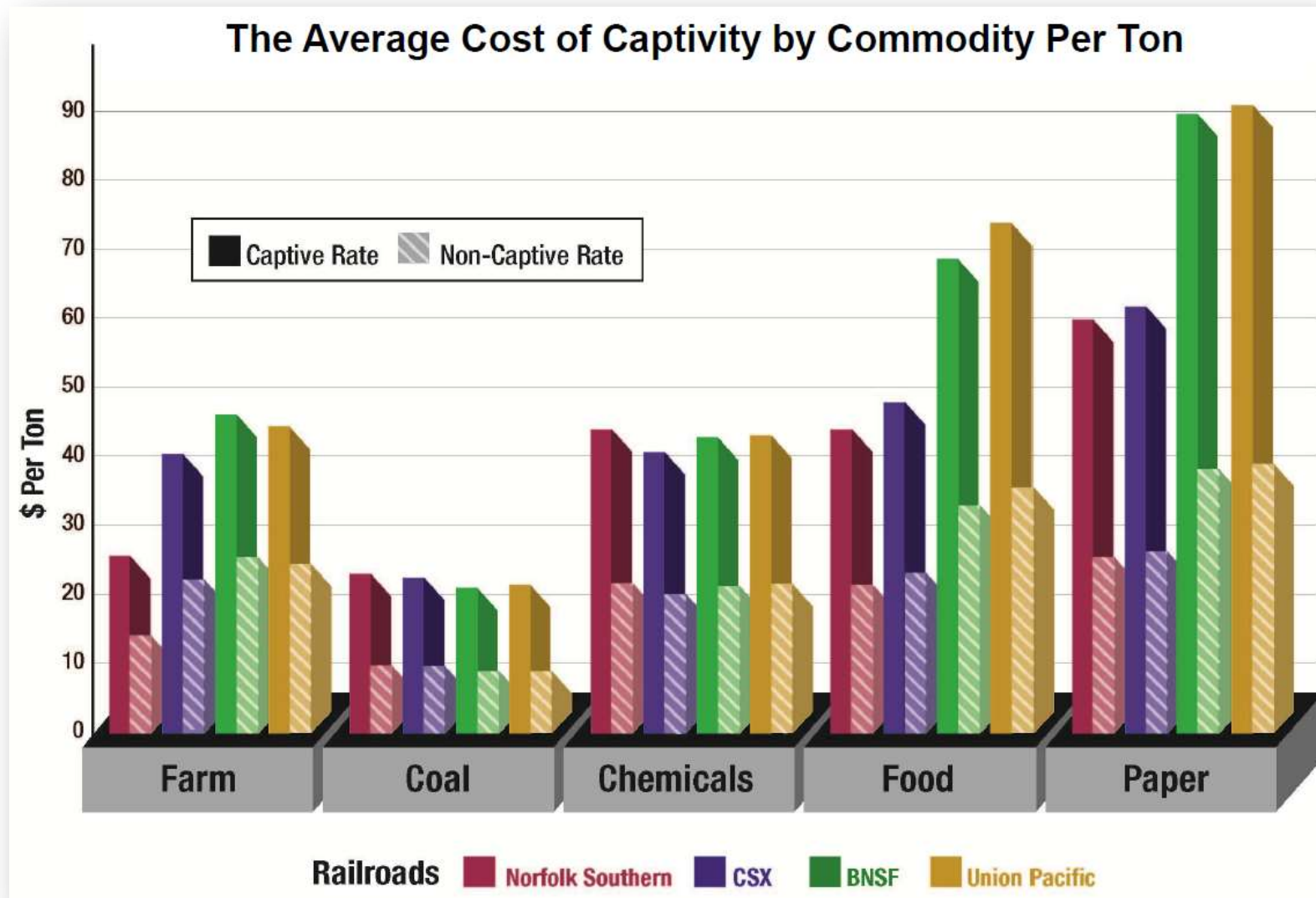
BNSF Railway

NS Railway

Iowa Interstate



# Competitive Advantage



# Regional Benefits

---

- Greater access to national and global markets
- More attractive to existing and new business
- Provides more cost effective shipping option
- Diverts city-to-city truck traffic
  - Lower emissions
  - Reduces maintenance needs on roadways
  - Reduces road congestion

# Potential Site Layout & Challenges



# Funding

- **\$1.7 million** – Rail Revolving Loan and Grant from the Iowa DOT
- **\$11.2 million** – BUILD Grant from the U.S. Department of Transportation



# Next steps

- Finalize an agreement with an operator
- Could open in 2019



# CONTAINER LOCATOR

# Project Beginnings

MPO Freight Roundtable identified problem and potential solution:

- Problem: Freight containers entering the state full and leaving empty
- Solution: Connect Iowa shippers to empty containers



# Project Development

---

CyBIZ Lab developed beta version

- Website is fully functional and open to the public
- [ContainerLocator.com](http://ContainerLocator.com)

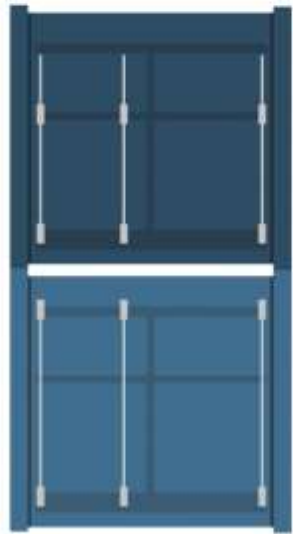
CyBIZLab



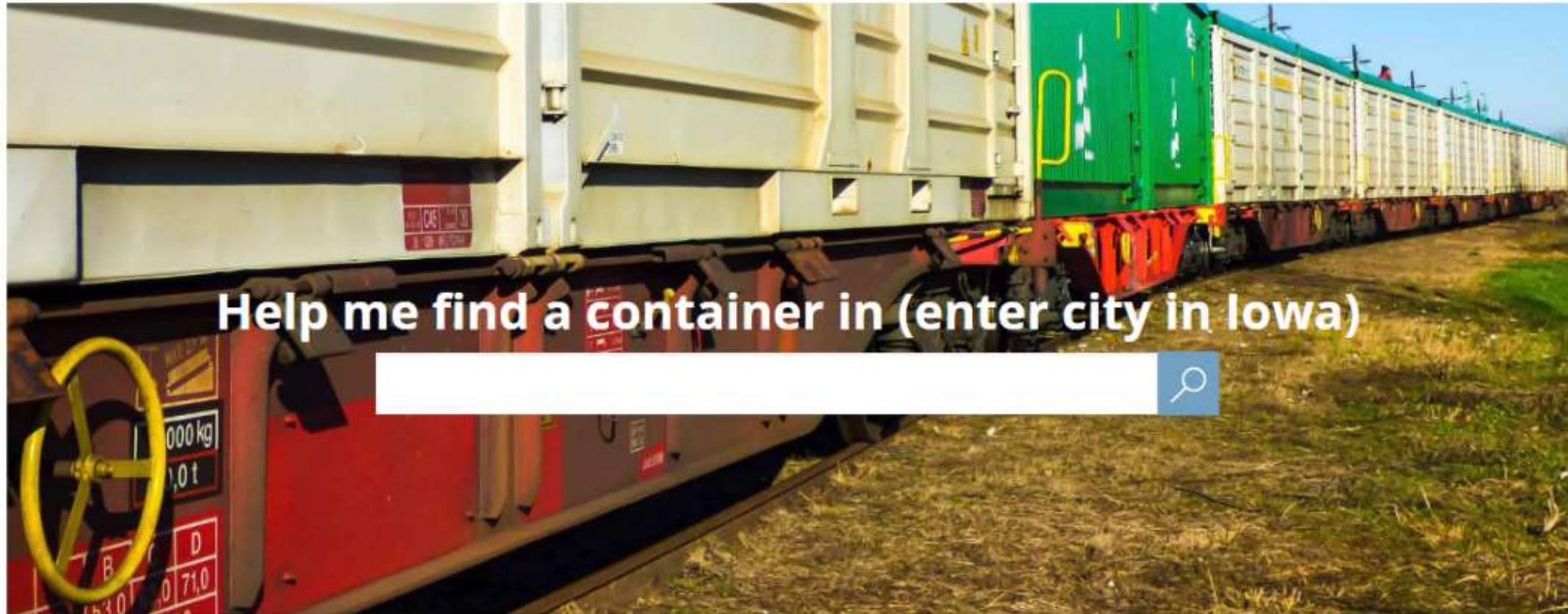


## Proudly Introduce a New Online Tool

To help Iowa companies find empty containers and save money on shipping

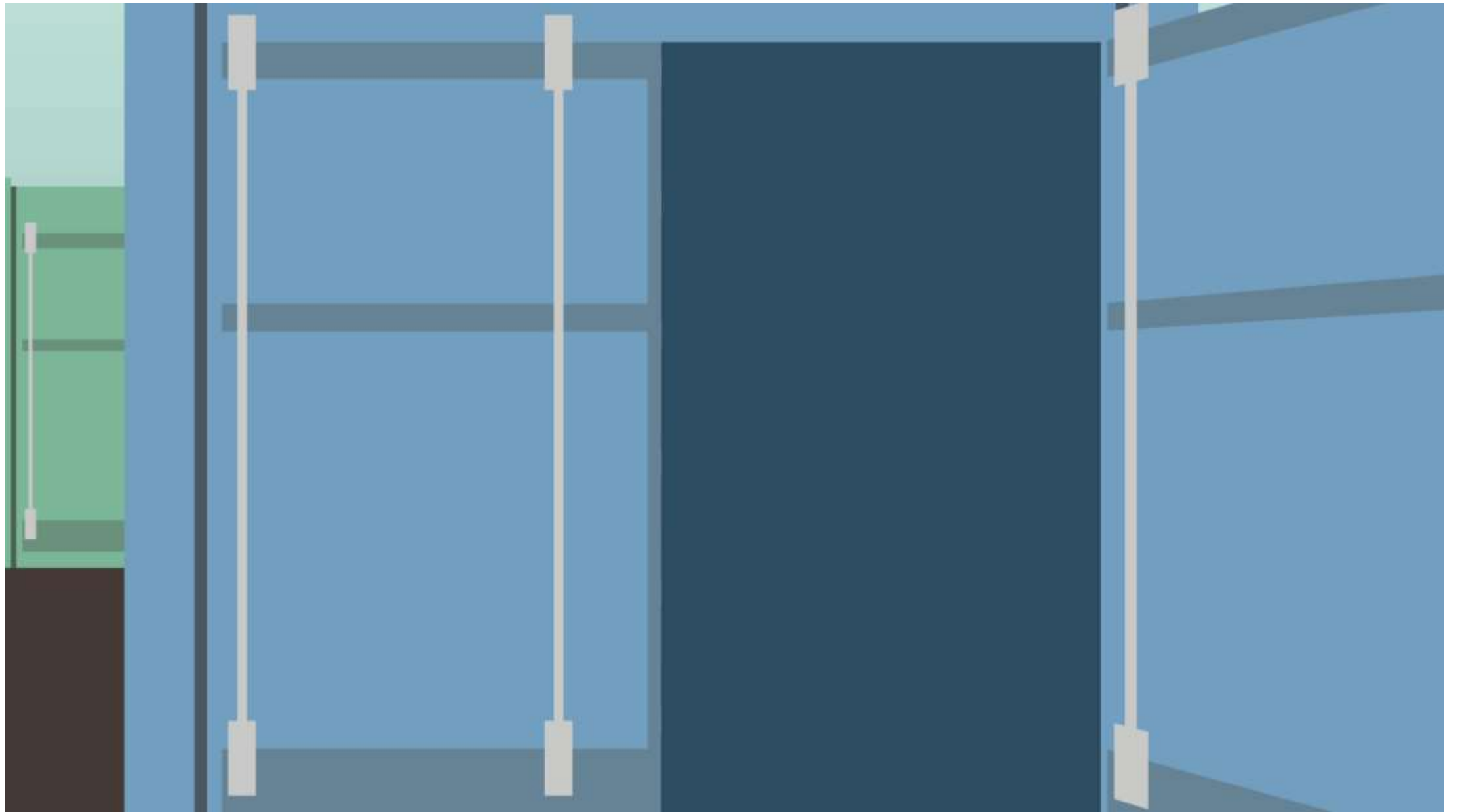


# CONTAINER LOCATOR



Help me find a container in (enter city in Iowa)







**BEST USER OF TECHNOLOGY**  
DES MOINES METROPOLITAN PLANNING ORGANIZATION



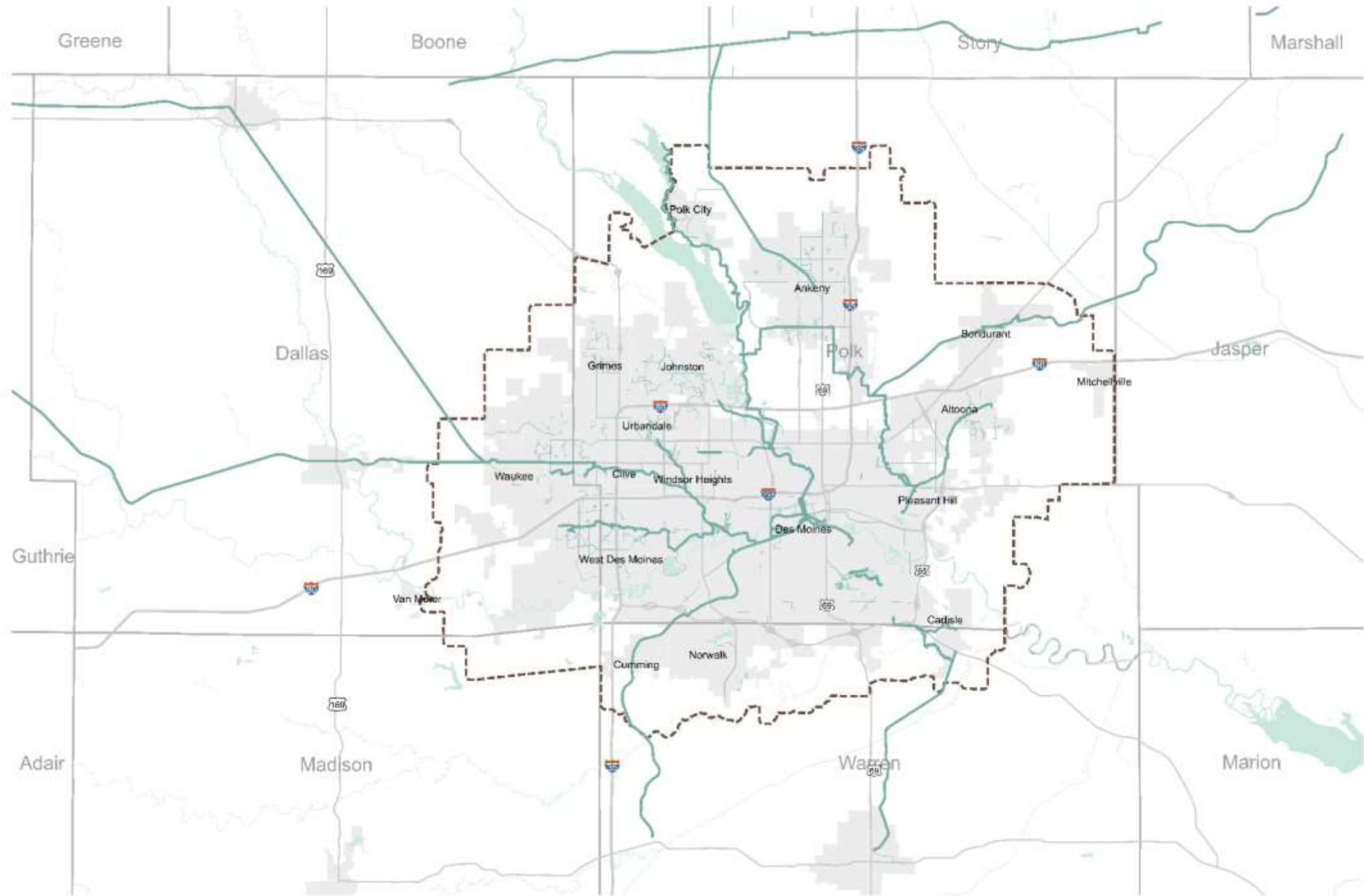
# IOWA DATA BIKE

# IOWA DATA BIKE

## Prioritizing Maintenance for Regional Trails

ASCE Transportation Conference  
November 8, 2017















UNIVERSITY OF CALIFORNIA  
CALIFORNIA UNION AVENUE

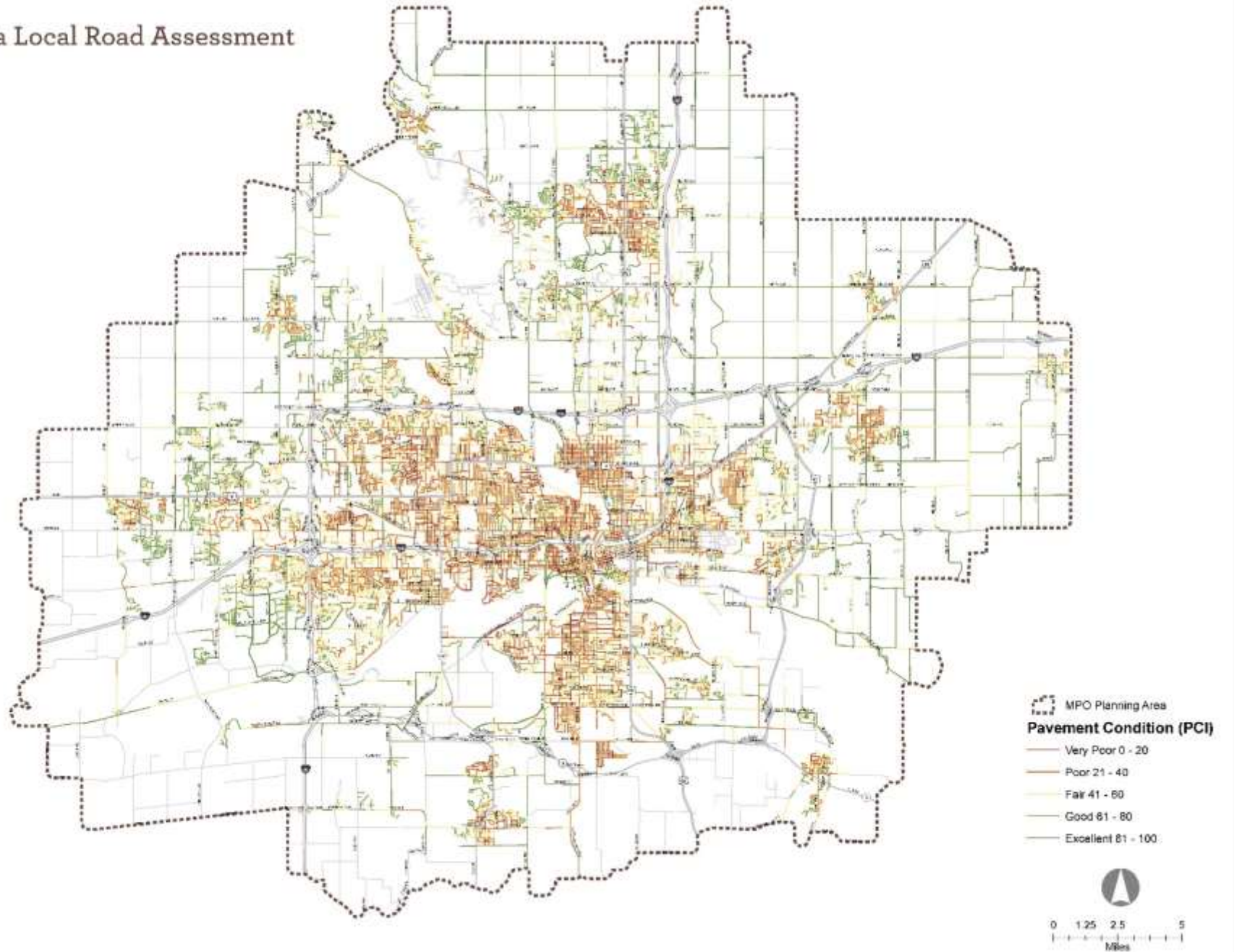


PathRunner

AUTOMATED ROAD AND PRESENTATION CONDITION SURVEY



# 2013 Iowa Local Road Assessment



# Could we do the same with a bike?



# Iowa Data Bike

The Data Bike is a proof-of-concept initiative by the Des Moines Area Metropolitan Planning Organization in partnership with Iowa Department of Public Health and Iowa Natural Heritage Foundation. Using an app that senses the roughness of pavement, the Data Bike will generate data scoring the condition of trails. The Data Bike will also collect 360-degree imagery along trails for Google Street View.



**1.** Using a Yuba Spicy Curry electric bicycle, the rider will maintain a steady speed to collect consistent data on the trails.



**2.** A Samsung Gear 360-degree camera uploads imagery for Google Street View.



**3.** An iPhone running the rRuf App will measure the roughness of trails and helps score condition of pavement.



**4.** A rear-facing GoPro camera will take geo-referenced photos of the trail conditions.

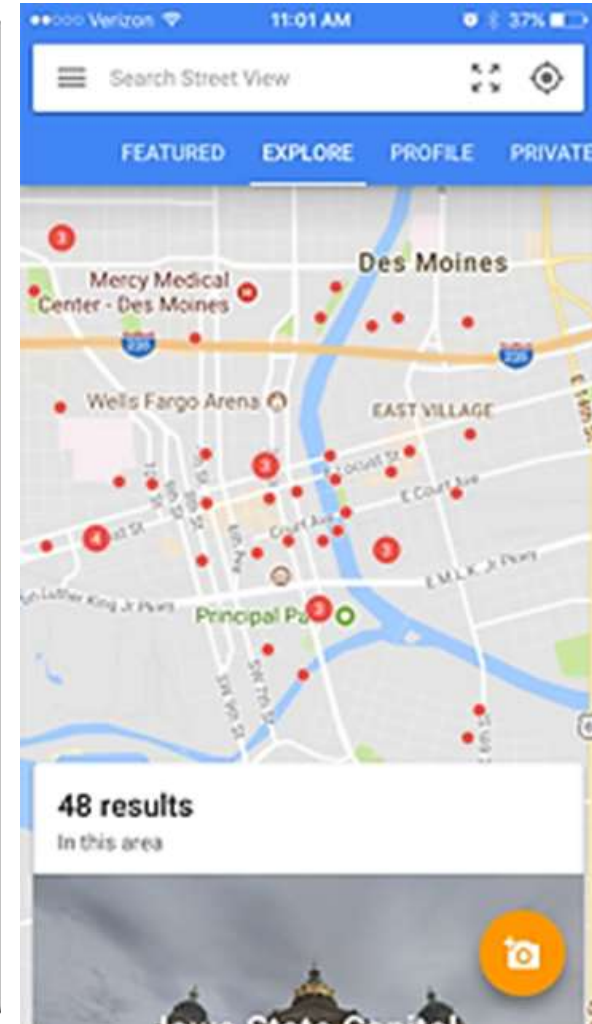
# iPhone





# iPhone

- rRuf (Rival Solutions)
- Street View (Google)



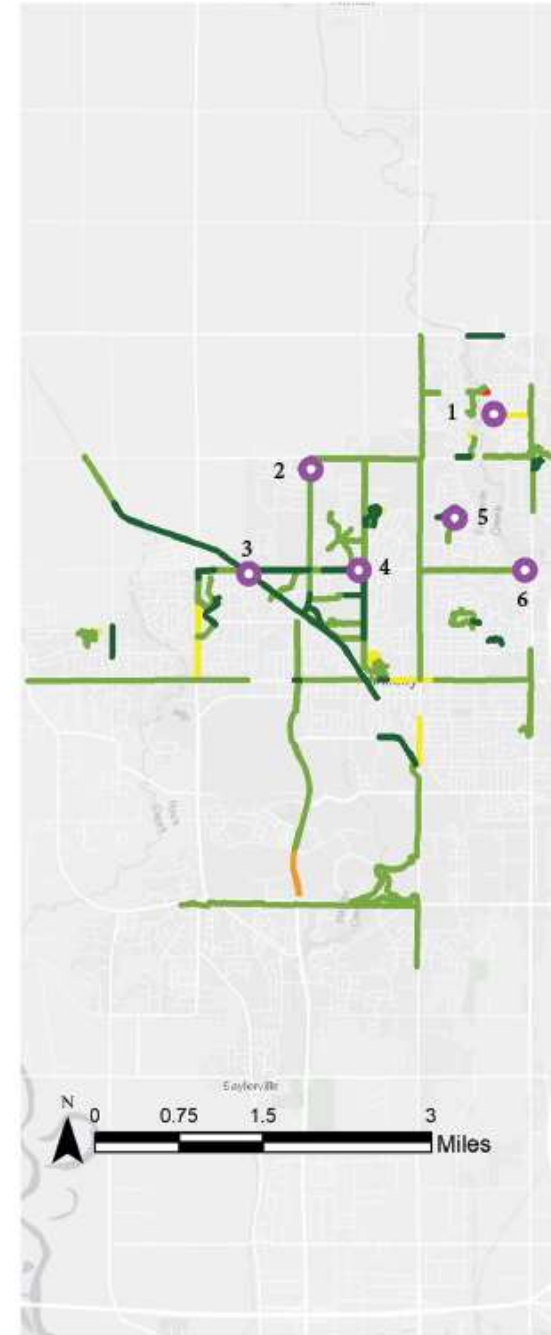
# NEAL SMITH & McHENRY PARK TRAILS



Miles: 4.52  
 Jurisdiction: Des Moines  
 Surface Type: Asphalt, Concrete



# CITY OF ANKENY TRAILS

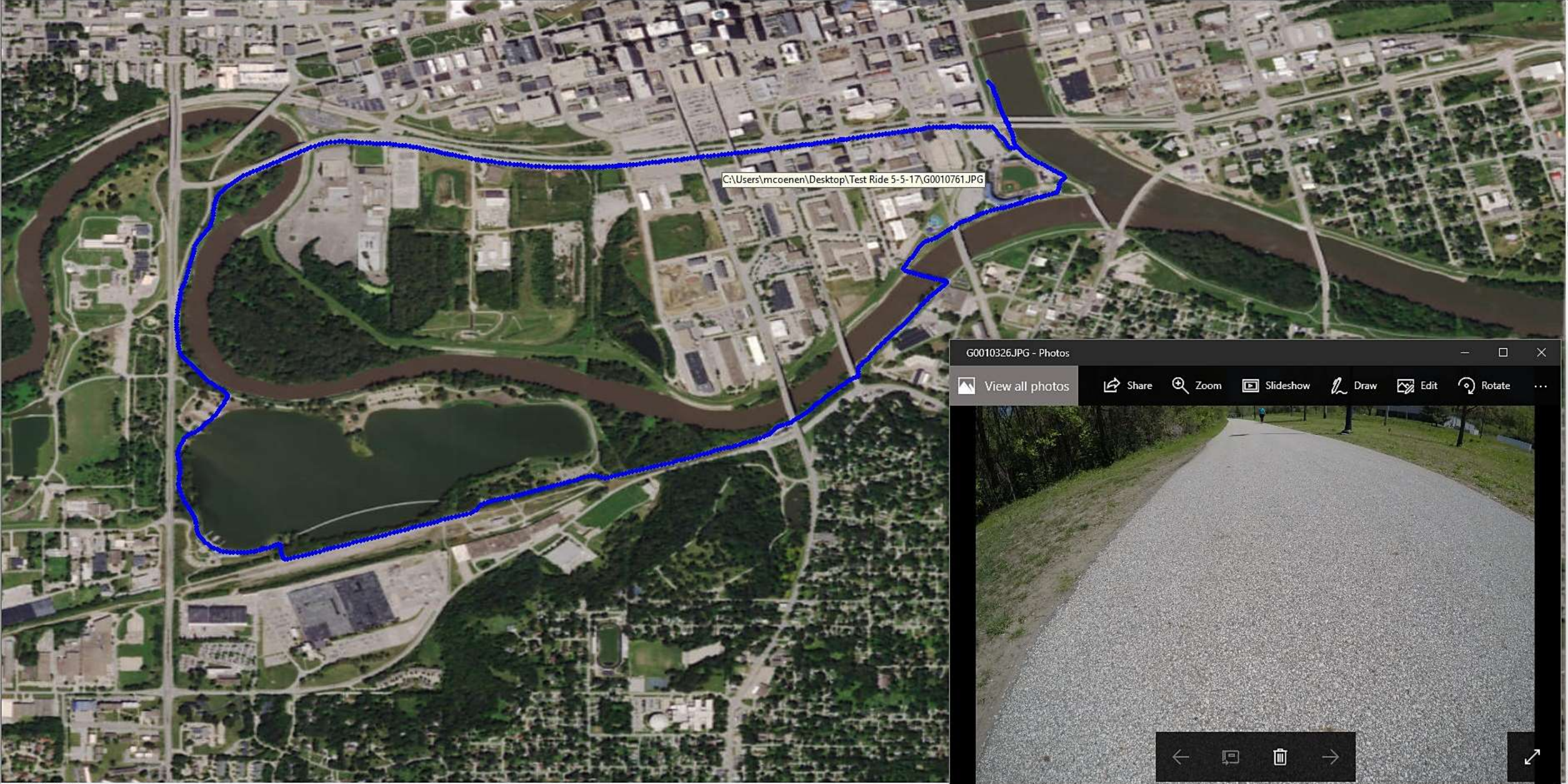


Miles: 40.38  
 Jurisdiction: Ankeny  
 Surface Type: Asphalt, Concrete



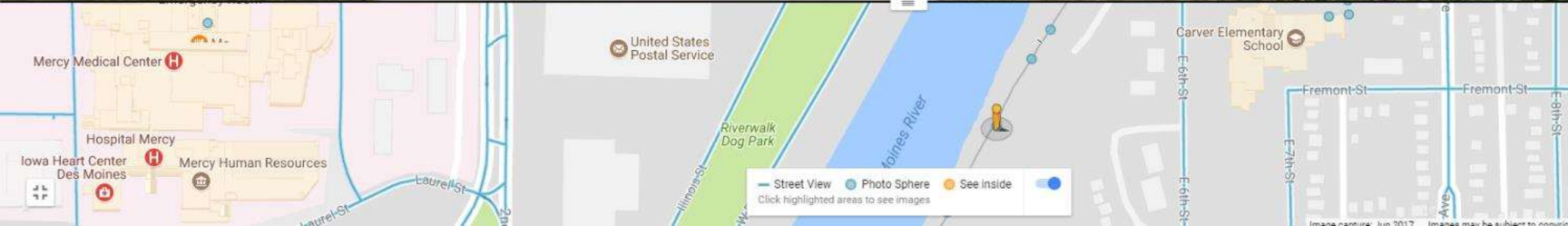
# GoPro





# Samsung Gear 360





# Getting Noticed

The MPO's Data Bike project is getting noticed in the region, across the country, and around the globe. Since announcing the project in late May, the MPO has given numerous media interviews and responded to several inquiries about the project. Those interested include:

**The Des Moines Register**



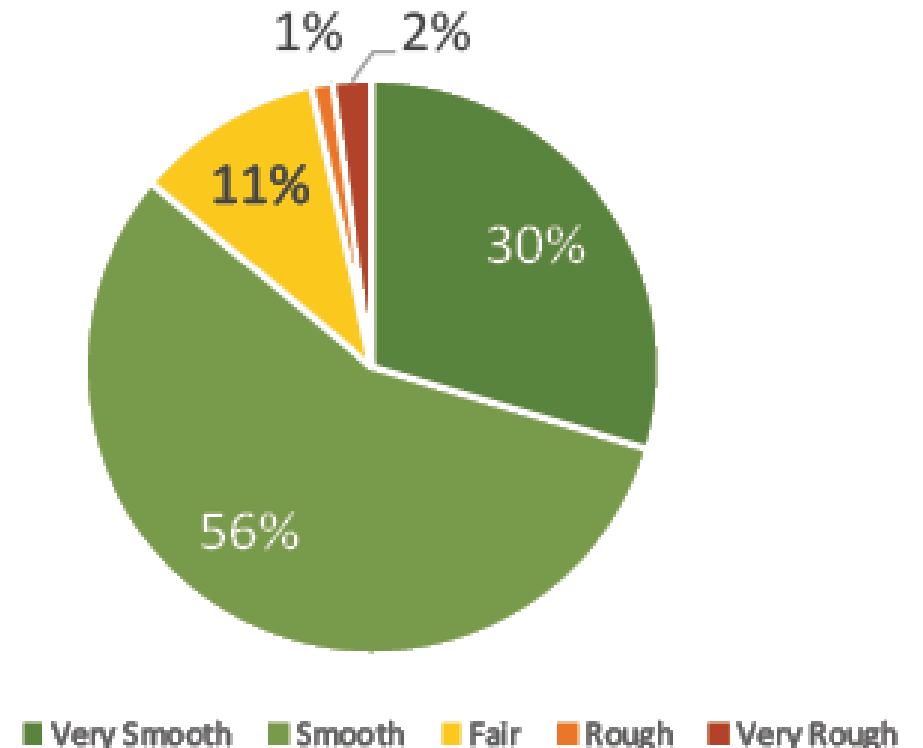
Rebuilding Place in the Urban Space



# State of the Trails

- Level 1 regional trails have limited rough condition segments
- Local connectors more likely to be in fair or rough conditions
- Data Bike collected:
  - 400 miles of data
  - 100,000 photos of conditions
  - 2,700 images for StreetView

**Trail Mileage by Condition**

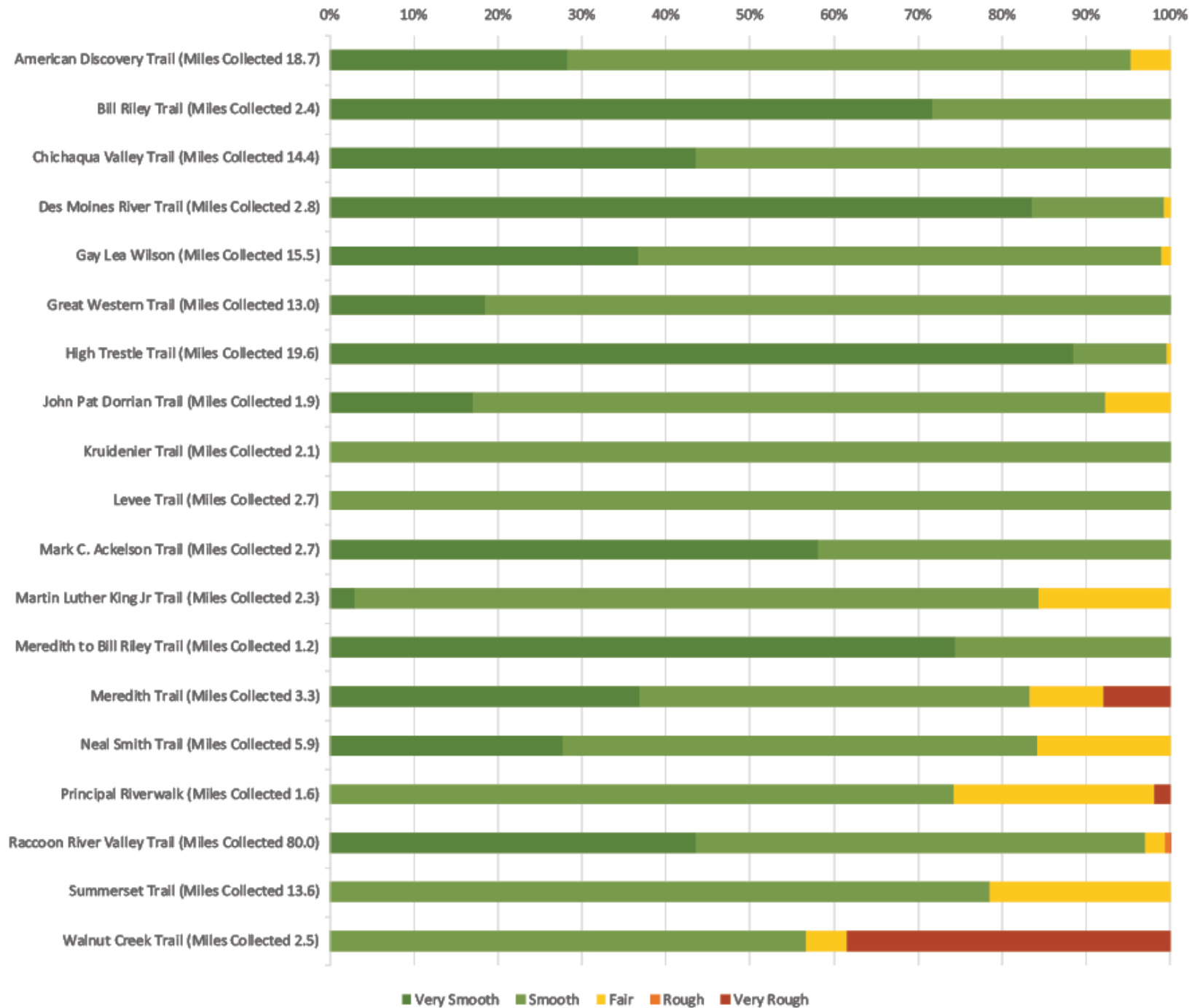


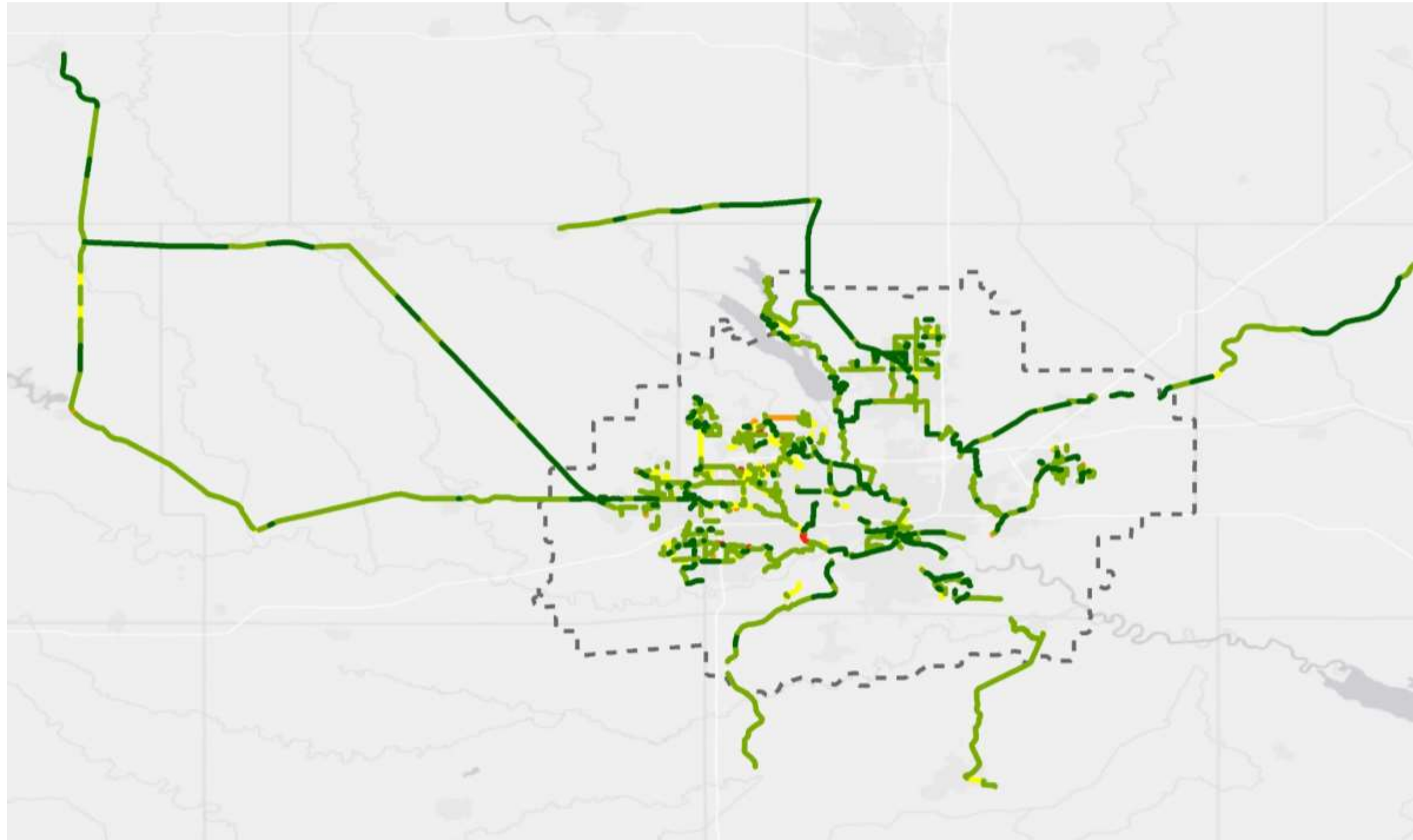


# Roughness Rating

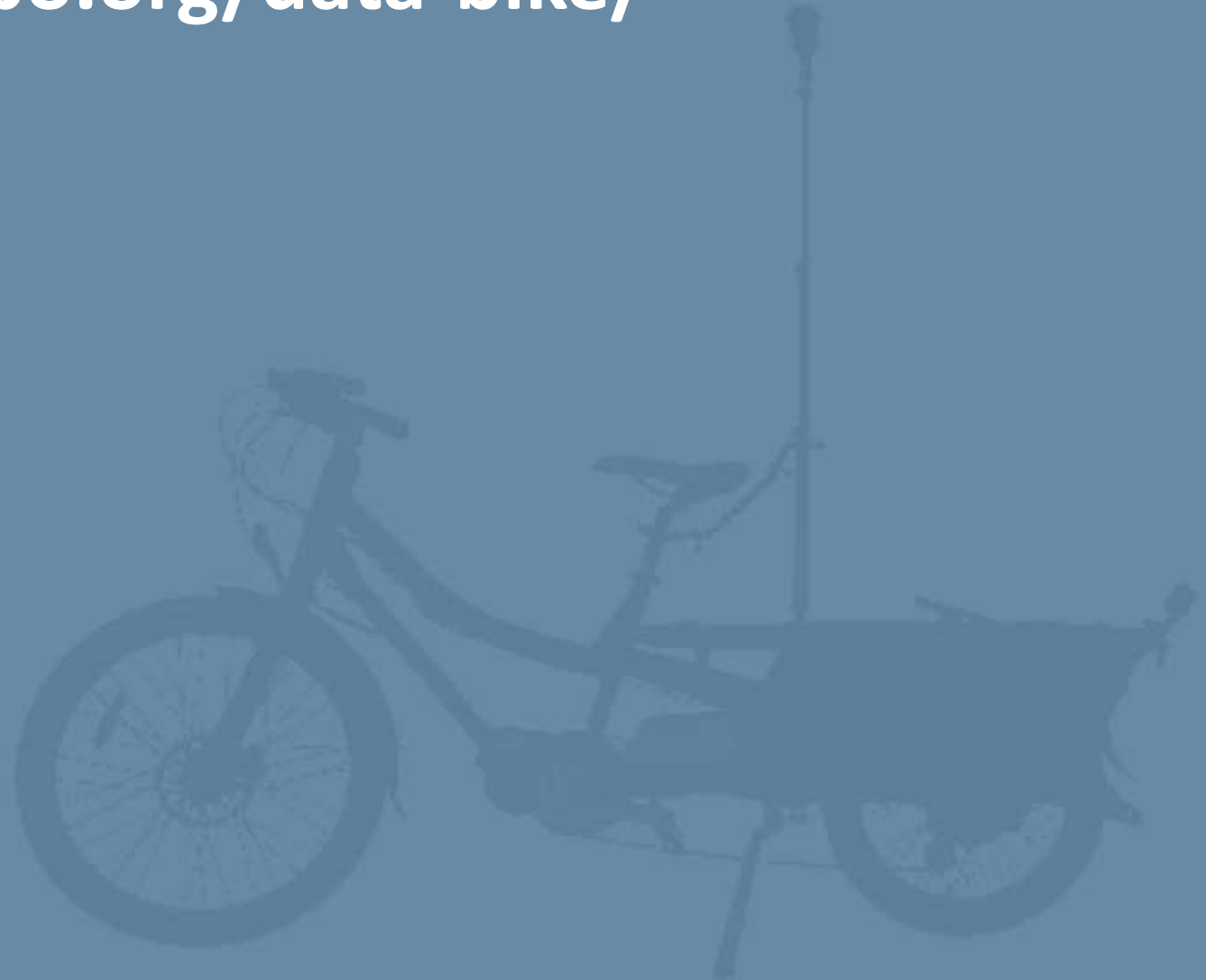
- **Very Smooth**
- **Smooth:** Signs of cracking
- **Fair:** Cracking may cause discomfort
- **Rough:** Advanced cracking, vegetation showing
- **Very Rough:** Cracking and vertical displacement







More info at [dmampo.org/data-bike/](http://dmampo.org/data-bike/)



# WATER TRAILS



**GREATER DES MOINES WATER TRAILS+GREENWAYS**

**GREAT OUTDOORS FOUNDATION**



**“THIS PROJECT IS  
THE MOST  
TRANSFORMATIONAL  
QUALITY-OF-LIFE  
PROJECT OF OUR  
GENERATION IN  
CENTRAL IOWA.”**

**JAY BYERS**  
GREATER DES MOINES PARTNERSHIP CEO AND  
CAPITAL CROSSROADS TRI-CHAIR



**WHY  
WATER**

# GOALS

**SAFETY**

**ECONOMIC  
DEVELOPMENT**

**ATTRACT  
WORKFORCE &  
TOURISM**

**WATER  
QUALITY**

**OUTDOOR  
RECREATION**

**DID YOU KNOW?  
IOWA OUTDOOR RECREATION  
GENERATES...**

**\$8.7 BILLION IN ANNUAL CONSUMER  
SPENDING**

**83,000 DIRECT JOBS**



**\$2.7 BILLION IN WAGES AND SALARIES**

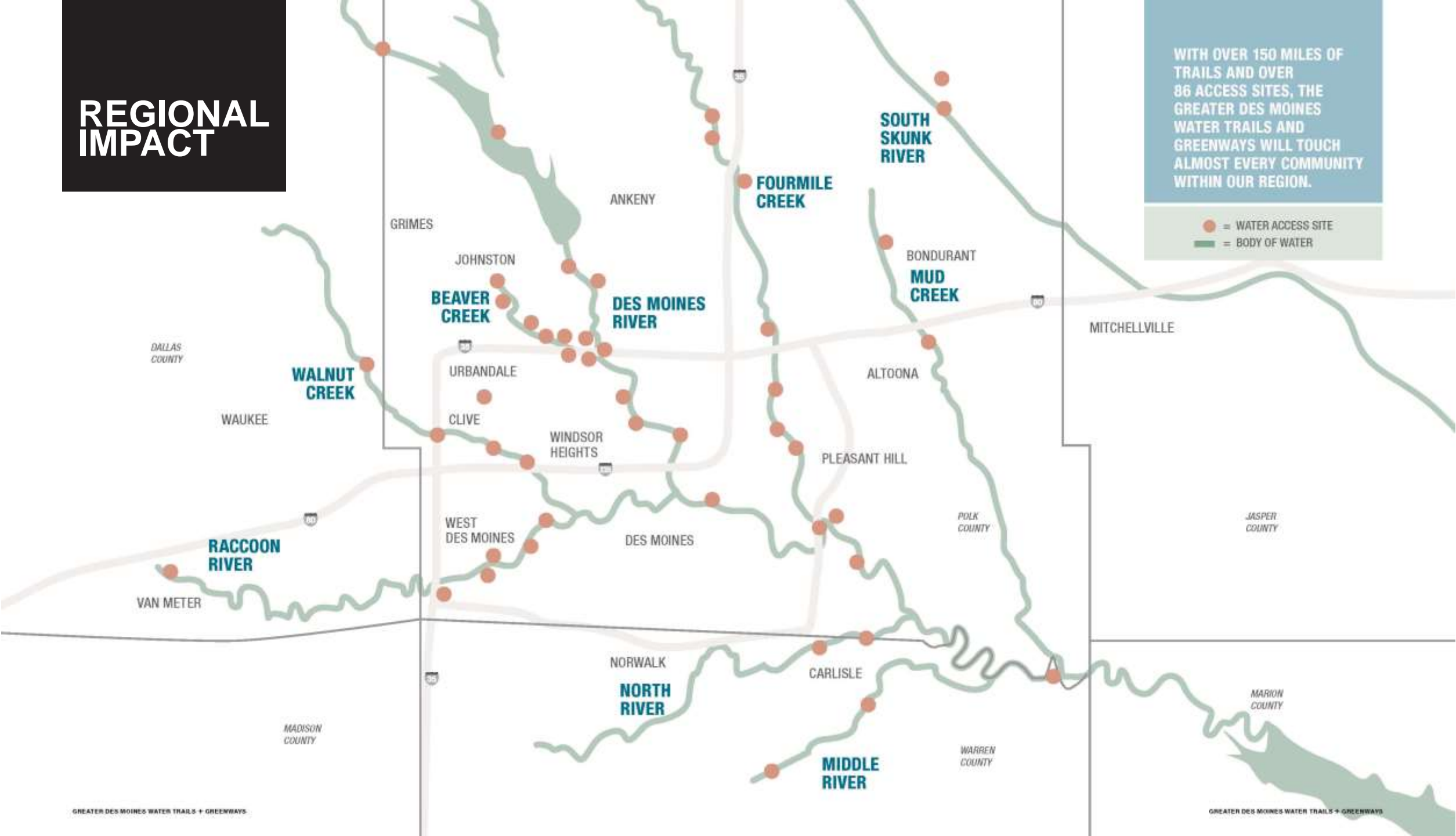
**\$649 MILLION IN STATE AND LOCAL TAX  
REVENUE**



# REGIONAL IMPACT

WITH OVER 150 MILES OF TRAILS AND OVER 86 ACCESS SITES, THE GREATER DES MOINES WATER TRAILS AND GREENWAYS WILL TOUCH ALMOST EVERY COMMUNITY WITHIN OUR REGION.

-  = WATER ACCESS SITE
-  = BODY OF WATER



**REGIONAL  
PROJECT**

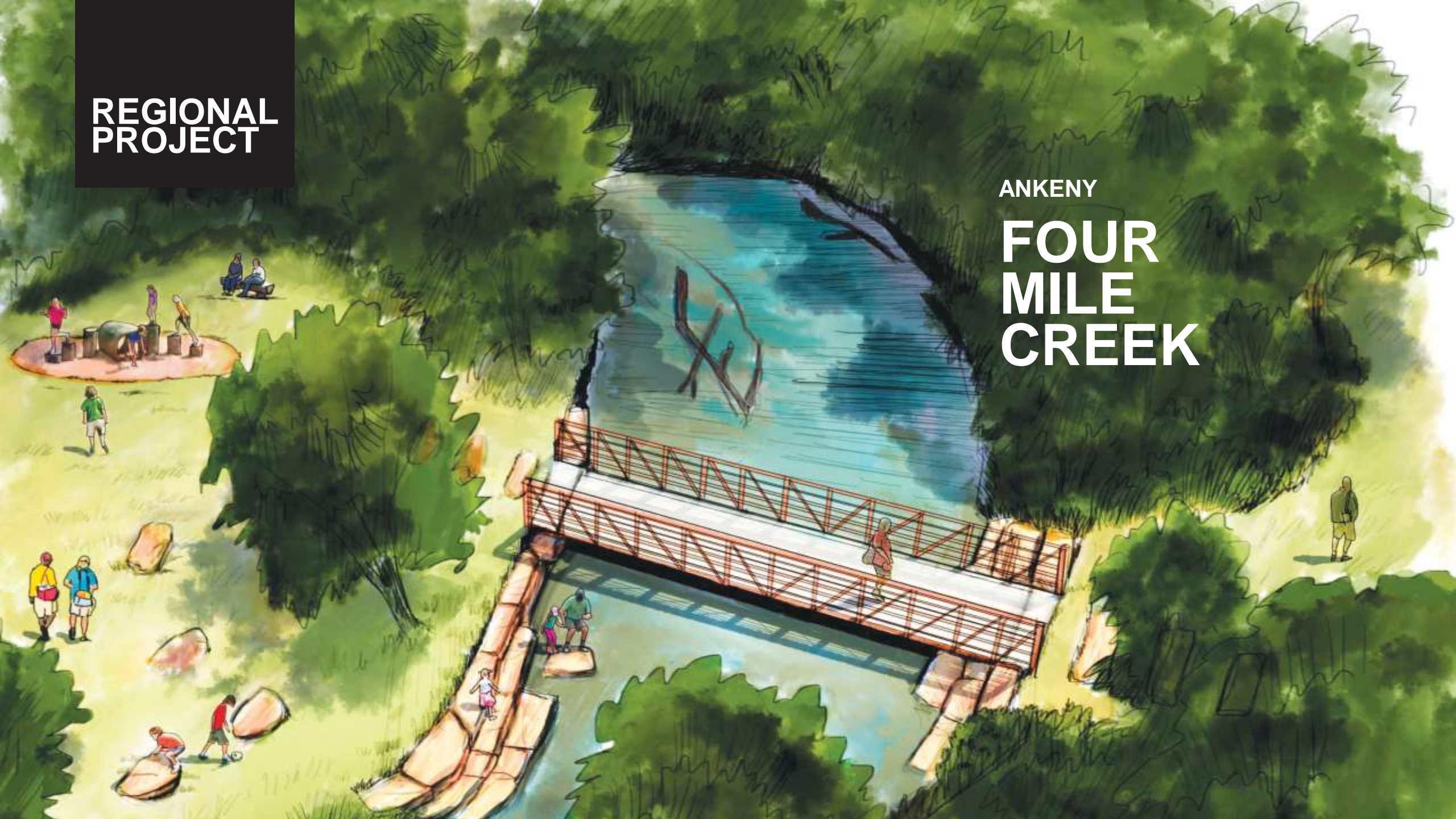
**WEST DES MOINES  
RACCOON  
RIVER**



**REGIONAL  
PROJECT**

**ANKENY**

**FOUR  
MILE  
CREEK**



**REGIONAL  
PROJECT**



JOHNSTON  
**BEAVER  
CREEK**

**REGIONAL  
PROJECT**



MAXWELL  
**CHICHAQUA  
BOTTOMS**

# REGIONAL PROJECTS

Waterway	Cost
Beaver Creek Total:	\$2.3 million
Des Moines River Total:	\$2.8 million
Four Mile Creek Total:	\$1.3 million
Middle River Total:	\$200,000
Mud Creek Total:	\$34,000
North River Total:	\$66,000
Raccoon River Total:	\$2.8 million
Skunk River Total:	\$256,000
Walnut Creek Total:	\$1.3 million
<b>TOTAL:</b>	<b>\$11 MILLION</b>

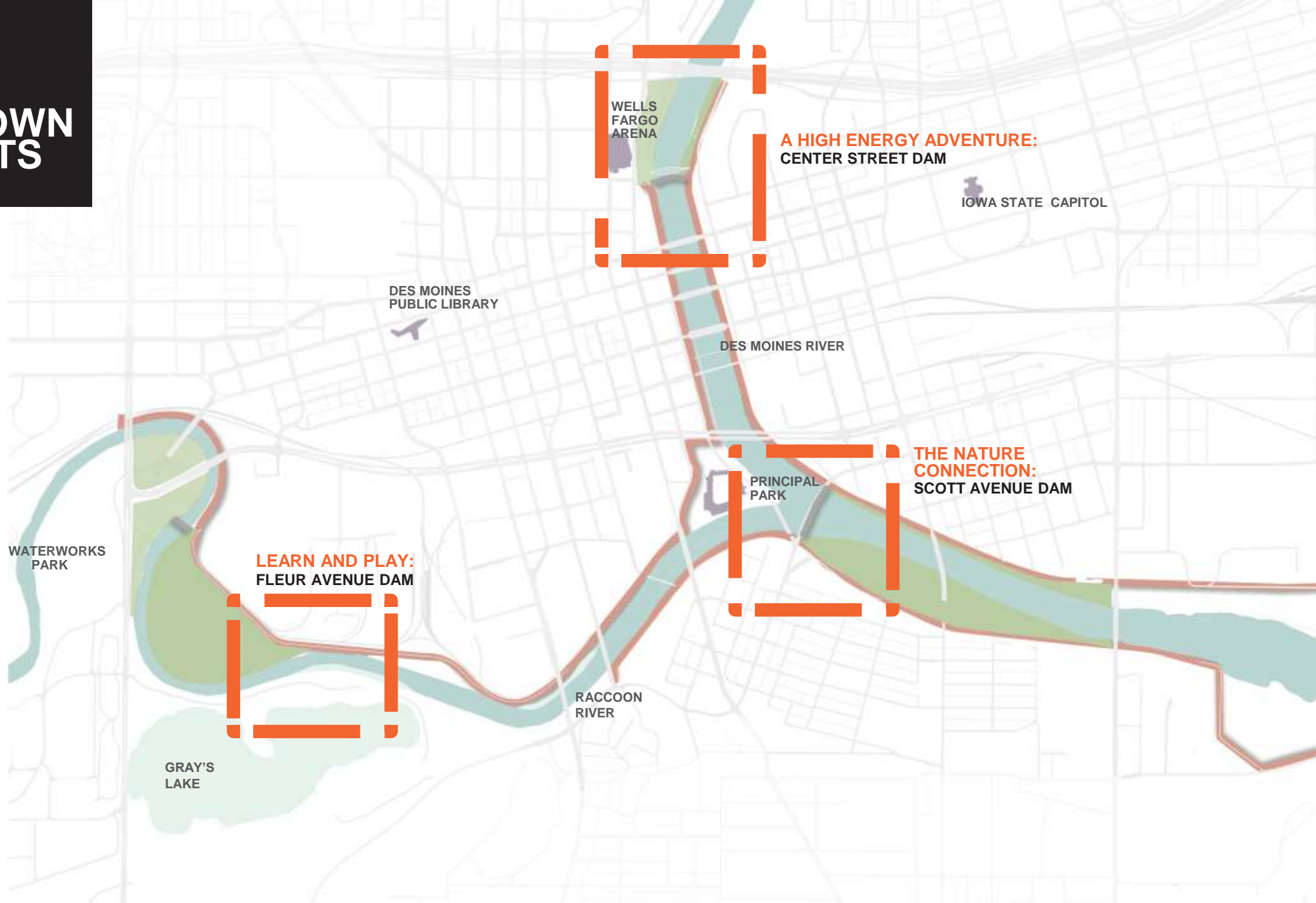


**\$6 MILLION**  
PUBLIC RESOURCE INVESTMENT  
Local City Improvement Plan, state, federal  
and local grants



**\$5 MILLION**  
GREAT OUTDOORS FOUNDATION REVOLVING FUND  
Privately donated funds available for loans to  
municipal entities, accelerating implementation  
beyond annual CIP budget constraints.

# DOWNTOWN PROJECTS



WELLS FARGO ARENA

**A HIGH ENERGY ADVENTURE:  
CENTER STREET DAM**

IOWA STATE CAPITOL

DES MOINES PUBLIC LIBRARY

DES MOINES RIVER

**THE NATURE CONNECTION:  
SCOTT AVENUE DAM**

PRINCIPAL PARK

WATERWORKS PARK

**LEARN AND PLAY:  
FLEUR AVENUE DAM**

RACCOON RIVER

GRAY'S LAKE

# DOWNTOWN PROJECTS



## A HIGH ENERGY ADVENTURE:

CENTER STEET DAM  
INTERNATIONAL ATTRACTION





# DOWNTOWN PROJECTS

## THE NATURE CONNECTION:

### SCOTT AVENUE DAM REGIONAL ATTRACTION



**DOWNTOWN  
PROJECTS**



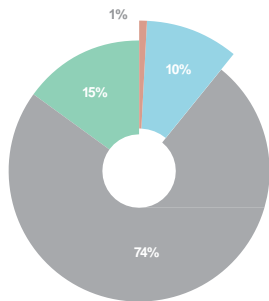
**LEARN AND PLAY:  
FLEUR AVENUE DAM  
REGIONAL ATTRACTION**



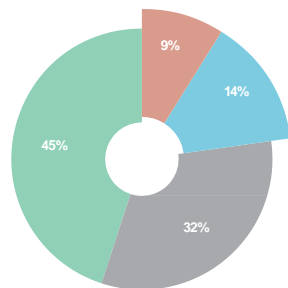


# SUMMARY COSTS

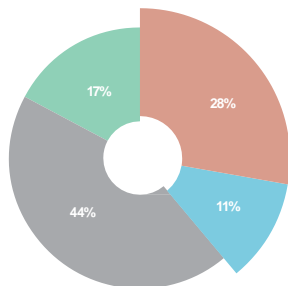
LEARN AND PLAY  
\$28 MILLION



NATURE CONNECTION  
\$22 MILLION



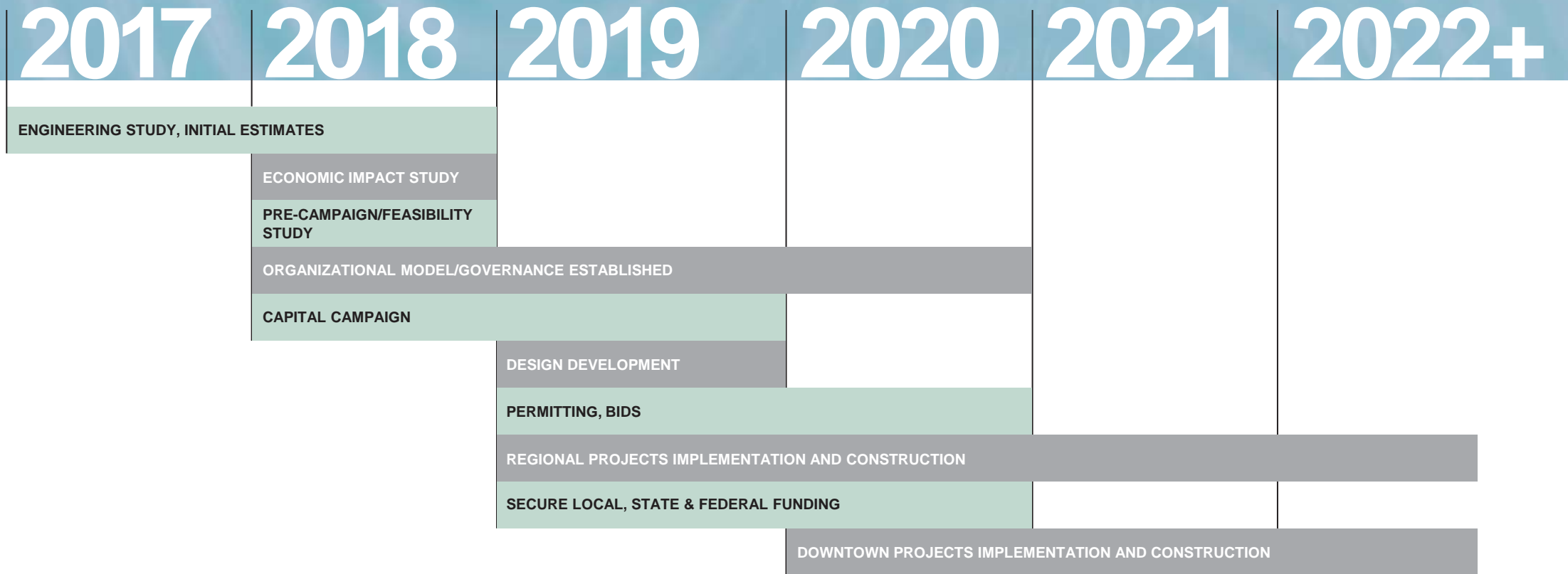
ADVENTURE PARK  
\$57 MILLION



- n Site Amenities:** Upland amenities proposed to enhanced the riverbanks
- n Upland Improvements:** Minimum upland improvements needed for access and portage
- n Recreational Improvements:** Whitewater drops, waveshapers, larger flashboards
- n Dam Safeing and Fish Passage:** Total cost of the dam safeing and fish passage



# TIMELINE



# LEADERSHIP

## **Water Trails Leadership Team**

Jay Byers, Greater Des Moines Partnership,  
Capital Crossroad Tri Chair  
Angela Connolly, Polk County,  
Capital Crossroad Tri Chair  
Kristi Knous, Community Foundation of Greater Des Moines,  
Capital Crossroad Tri Chair  
Rick Tollakson, Hubbell Realty Co.,  
Water Trails Engineering Study, Chair  
Todd Ashby, Des Moines Area MPO  
Dan Cornelison, Hubbell Realty Co.  
Paula Dierenfeld, City of Johnston  
Greg Edwards, Catch Des Moines  
Joe Gatto, City of Des Moines  
Joseph Jones, City of Windsor Heights  
Kathryn Kunert, MidAmerican  
Sara Kurovski, City of Pleasant Hill  
Rich Leopold, Polk County Conservation  
Josh Mandelbaum, City of Des Moines  
Ben McLean, Ruan  
Julie Stewart, Prairie Meadows  
Russ Trimble, City of West Des Moines

## **Great Outdoors Foundation Board of Directors Fiscal Sponsor**

Pat Boddy, RDG Planning & Design  
Joe Corfits, UnityPoint Health — Des Moines  
Dan Cornelison, Hubbell Realty Co., Chair  
Liz Cox, Prevent Child Abuse Iowa  
Matt Marckmann, Morgan Stanley  
Chris McCarthy, UnityPoint Health — Des Moines  
Kurt Mumm, NAI Optimum  
Tom Newton, Wellmark Blue Cross Blue Shield  
Cory Sharp, FEH Design  
Steven Tyler, Whitfield and Eddy Bethany  
Wilcoxon, McClure Engineering

## **Contact**

Hannah Inman  
Great Outdoors Foundation  
515.975.9990

[hannah@greatoutdoorsfoundation.org](mailto:hannah@greatoutdoorsfoundation.org)

## **Implementation Team**

Claire Brehmer, Hubbell Realty Co.  
Tara Deering-Hanser, Sonder Public Relations  
Phil Delefield, City of Des Moines  
Angela Dethlefs-Trettin, Community Foundation of Greater Des Moines  
Josh Faber, Renaissance Group Inc  
Trina Flack, Catch Des Moines  
Nate Hooegeveen, Iowa DNR  
Hannah Inman, Great Outdoors Foundation  
Dylan Mullenix, Des Moines Area MPO  
Gunnar Olson, Des Moines Area MPO  
Kyle Oppenhuizen, Greater Des Moines Partnership  
Nikki Syverson, Capital Crossroads  
Tiffany Tauscheck, Greater Des Moines Partnership  
Staci Williams, ISG

## **Feasibility Study Funders**

Community Foundation of Greater Des Moines  
Greater Des Moines Partnership  
The Des Moines Committee  
Catch Des Moines  
Des Moines Area MPO  
Hubbell Realty  
Angela Connolly, Chair, on behalf of the Polk County Board  
of Supervisors

## **Engineering Study Funders**

Community Foundation of Greater Des Moines  
Leadership Circle  
*Sunnie Richer & Roger Brooks*  
*Suzie Glazer Burt*  
*Patty & Jim Cownie Richard*  
*L. Deming, M.D. Michele &*  
*Barry Griswell Charlotte &*  
*Fred S. Hubbell Sharon S. &*  
*Kyle J. Krause Jill & Mark*  
*Oman*  
*Emily & Fred Weitz*  
Greater Des Moines Convention and Visitors Bureau  
Greater Des Moines Partnership  
Polk County Conservation  
Des Moines Area Association of Realtors  
Area jurisdictions  
*Altoona, Ankeny, Bondurant, Carlisle, Clive, Des Moines, Grimes,*  
*Johnston, Mitchellville, Norwalk, Pleasant Hill, Urbandale, Waukee,*  
*West Des Moines, Windsor Heights, Polk County,*  
*Van Meter, and Warren County*



**“IT’S TIME TO LOOK  
AT OUR WATER IN  
A NEW WAY. IT’S  
TIME TO DREAM  
BIG WITH ALL  
HANDS ON DECK.”**

**RICK TOLLAKSON**

PRESIDENT AND CEO, HUBBELL REALTY CO., AND  
WATER TRAILS ENGINEERING STUDY CHAIR





# THANK YOU

Todd Ashby, AICP  
Executive Director  
Des Moines Area MPO  
[tashby@dmampo.org](mailto:tashby@dmampo.org)  
515-334-0075